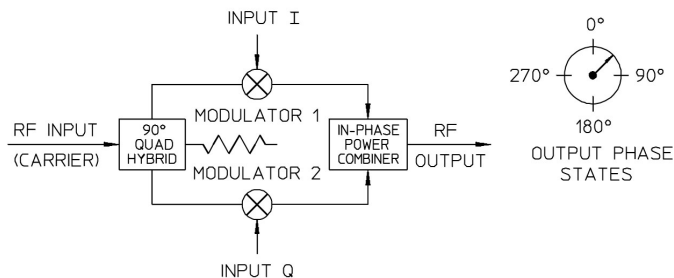


# VECTOR I&Q MODULATOR - VMF-3F-2050 SQ

## TECHNICAL FEATURE

### FEATURES

- Space Qualified
- High Accuracy
- Hi-Rel Flatpack



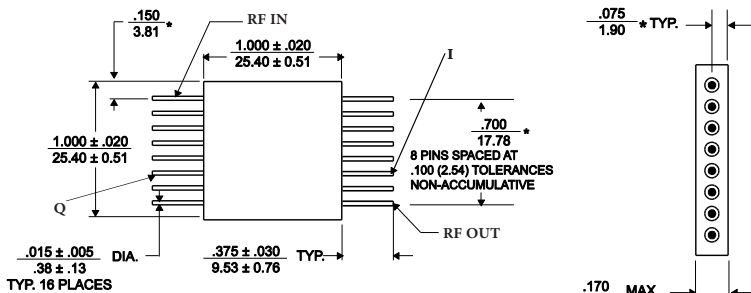
### PERFORMANCE

RF Input Frequency.....	2050 MHz (2042-2052MHz)
RF Input Power .....	+10 dB nom., +13 dB max.
I&Q Input Power Level .....	0 dBm max.
I&Q Bandwidth .....	DC - 10 MHz
Conversion Loss.....	10 dB typ., 12 dB max. (below Modulation Input)
VSWR RF/LO .....	1.5:1 typ., 1.8:1 max.
Impedance.....	50 Ohm nom.
Modulation Accuracy (measured @ 4 quadrants, 0 dBm input)	
Phase Balance .....	± 7° max.
Amplitude Balance .....	1.3 dB max.
Operating Temperature .....	-55° to +85° C

### DESCRIPTION

I & Q modulators are integrated devices that produce linear phase modulation of an RF carrier. In the VMF Series, specially optimized circuits are used to provide superior performance across very wide bandwidths and high data rates. This has been designed, manufactured and qualified per Merrimac document CENG-0001, "Standard Design Requirements for Space Qualified Devices".

## PACKAGE OUTLINE



- NOTES:
1. Tolerance on 3 place decimals ± .010(.25) except as noted.
  2. Dimensions in inches over millimeters.
  3. Dimensions marked with \* apply only at body.
  4. All unmarked pins are case ground.

Crane Aerospace & Electronics  
 Microwave Solutions – Merrimac Industries  
 41 Fairfield Place, West Caldwell, NJ 07006  
 + 1.973.575.1300 ext. 1309 • mw@crane-eg.com  
 www.craneae.com/mw

VMF-3F-2050 SQ

