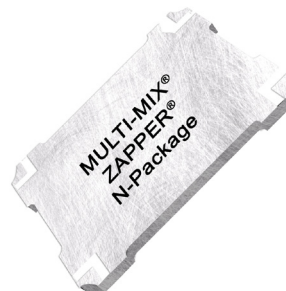


QUAD HYBRID - QHDZ-2N-0.9G

TECHNICAL FEATURE

FEATURES

- 740 - 960 MHz
- High Isolation
- Low Loss
- Excellent Phase / Amplitude Balance
- High Power Handling
- Surface Mount



PERFORMANCE

Frequency Range.....	740 - 960 MHz
Isolation.....	- 23 dB min.
Insertion Loss.....	0.20 dB max.
VSWR.....	1.15:1 max.
Amplitude Balance.....	±0.30 dB max.
Phase Balance.....	90 ± 2° max.
Input Power.....	225 watts max.
RF Interface.....	Surface mount
Operating Temperature Range.....	-55 to +95°C

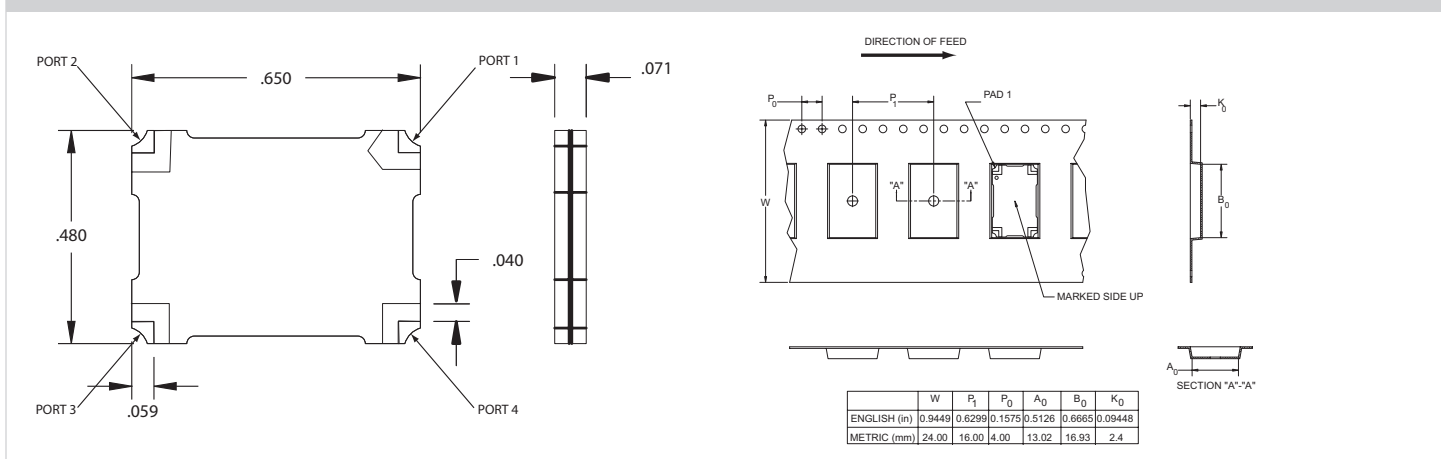
DESCRIPTION

The Multi-Mix[®] Zapper[®] QHDZ series provides a 3 dB 90° coupling with low insertion loss, low VSWR, and high isolation. Accurate phase and amplitude balance make this series ideal for use in IQ networks, power amplifiers, radio transceivers, receiver multicouplers and RF signal distribution and processing equipment.

QHDZ quad hybrids are fusion bonded multilayer stripline devices. The fusion bonding process yields a homogeneous monolithic dielectric structure with reliability, ruggedness, and electrical performance that is superior to conventional adhesive bonding techniques. Applications:

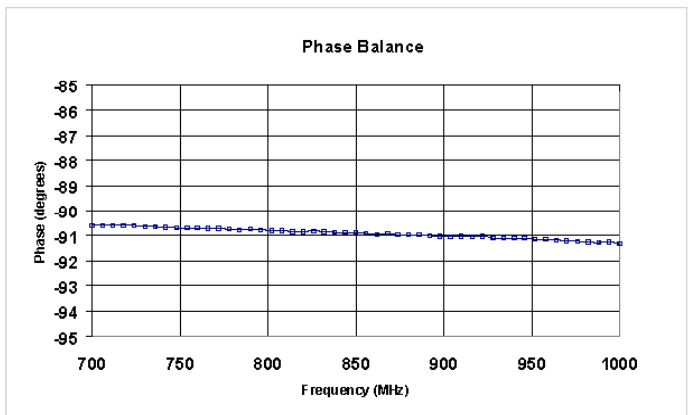
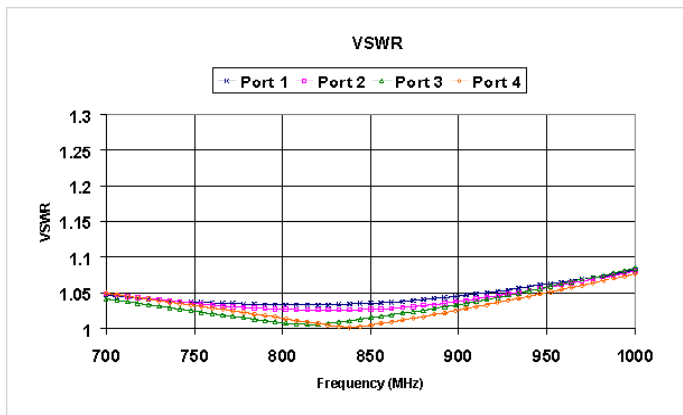
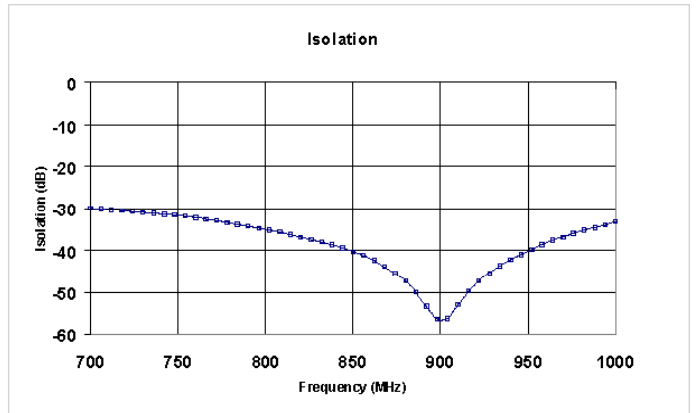
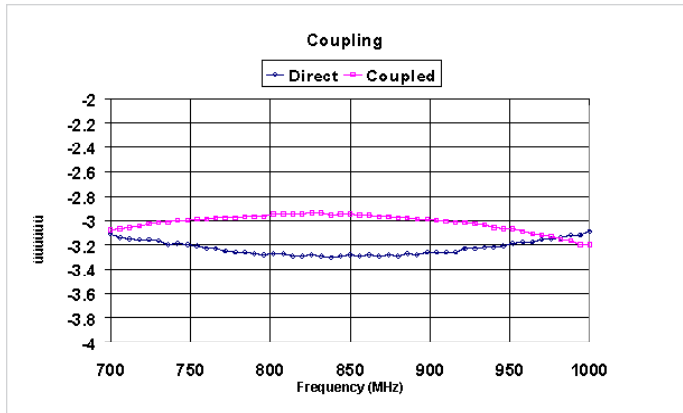
- GSM 850 / 950 RF subsystems
- Land mobile radio (LMR)
- Radar communications
- Homeland security networks
- Public safety BTS amplifier

PACKAGE OUTLINE / TAPE & REEL ORIENTATION

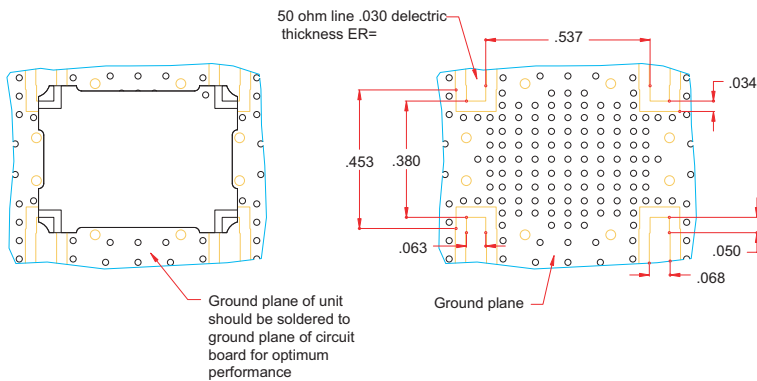


QUAD HYBRID - QHDZ-2N-0.9G

PERFORMANCE DATA



MOUNTING GUIDELINES



TRUTH TABLE

	1	2	3	4
1	Input	Iso	-90°	0°
2	Iso	Input	0°	-90°
3	-90°	0°	Input	Iso
4	0°	-90°	Iso	Input