

QUAD HYBRID - QHDZ-2H-2.1G SQ

TECHNICAL FEATURE

FEATURES

- 2000 - 2300 MHz
 - Space Qualified
 - Multiple Plating Options
 - Excellent Phase / Amplitude Balance
- High Isolation
 - Low Loss
 - Surface Mount
 - Tape & Reel Available



PERFORMANCE

Frequency Range.....	2000 - 2300, 2110 - 2170 MHz
Isolation	23, 26 dB min.
Insertion Loss	0.15, 0.12 dB max.
VSWR.....	1.15:1, 1.12:1 max.
Amplitude Balance	±0.2 dB max.
Phase Balance	90 ± 2° max.
Input Power	225 watts max.
RF Interface.....	Surface mount
Operating Temperature Range	-55 to +95°C

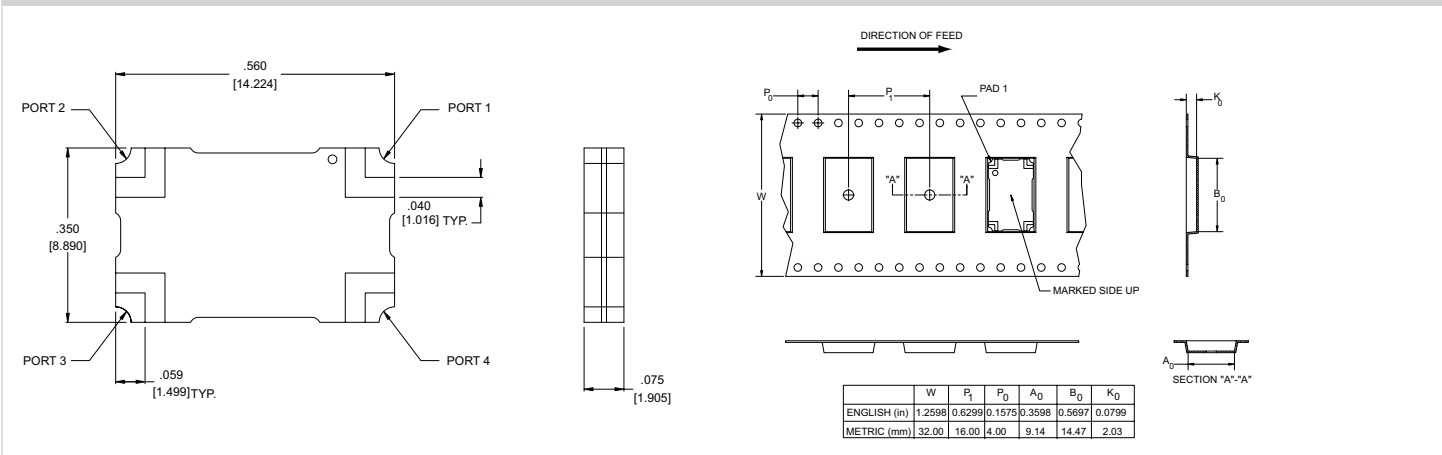
DESCRIPTION

The Multi-Mix[®] Zapper[®] QHDZ series provides a 3 dB 90° coupling with low insertion loss, low VSWR, and high isolation. Accurate phase and amplitude balance make this series ideal for use in IQ networks, power amplifiers, radio transceivers, receiver multicouplers and RF signal distribution and process-ing equipment.

QHDZ quad hybrids are fusion bonded multilayer stripline devices. The fusion bonding process yields a homogeneous monolithic dielectric structure with reliability, ruggedness, and electrical performance that is superior to conventional adhesive bonding techniques.

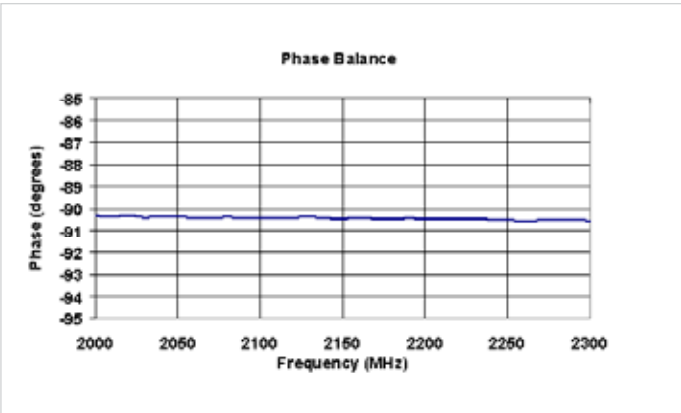
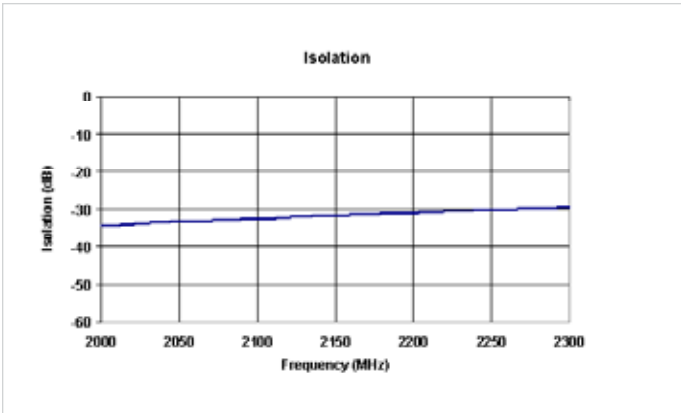
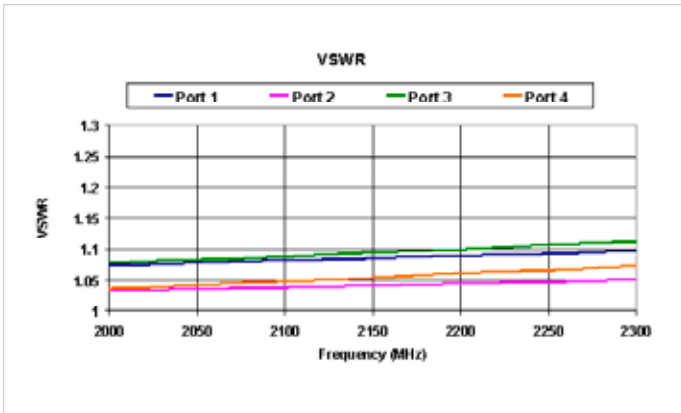
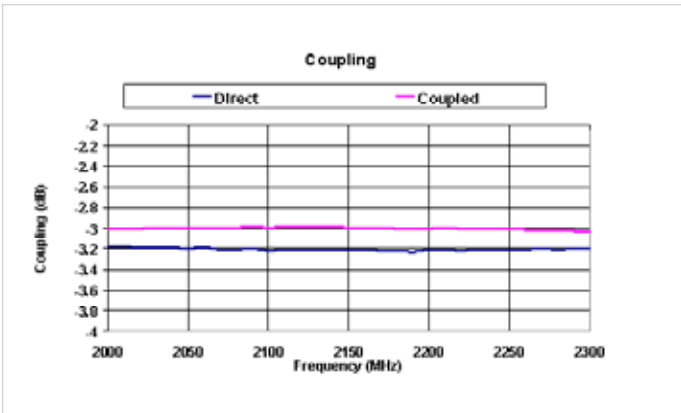
Parts, materials and processes are in accordance with Merrimac document CENG-0001 "Standard Design Requirements for Space Qualified Devices".

PACKAGE OUTLINE / TAPE & REEL ORIENTATION

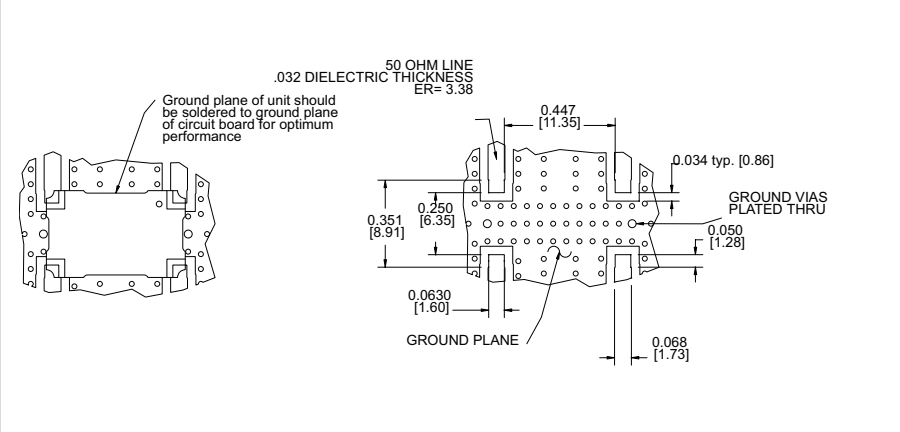


QUAD HYBRID - QHDZ-2H-2.1G SQ

PERFORMANCE DATA



MOUNTING GUIDELINES



TRUTH TABLE

	1	2	3	4
1	Input	Iso	-90°	0°
2	Iso	Input	0°	-90°
3	-90°	0°	Input	Iso
4	0°	-90°	Iso	Input

DS_Quad_QHDZ2H21GSQ_022624.indd. This revision supersedes all previous releases. All technical information is believed to be accurate, but no responsibility is assumed for errors. We reserve the right to make changes in products or specifications without notice. Copyright © 2011 Crane Electronics, Inc. All rights reserved.

