

# QUAD HYBRID - QHDZ-2H-1.5G

## TECHNICAL FEATURE

### FEATURES

- 1000 - 2000 MHz
- High Isolation
- Low Loss
- Excellent Phase / Amplitude Balance
- Surface Mount
- Tape & Reel Available



### PERFORMANCE

Frequency Range.....	1000 - 2000 MHz
Isolation .....	22 dB min.
Insertion Loss .....	0.25 dB max.
VSWR.....	1.2:1 max.
Amplitude Balance .....	±0.5 dB max.
Phase Balance .....	90 ± 3° max.
Input Power .....	200 watts max.
RF Interface.....	Surface mount
Operating Temperature Range .....	-55 to +95°C

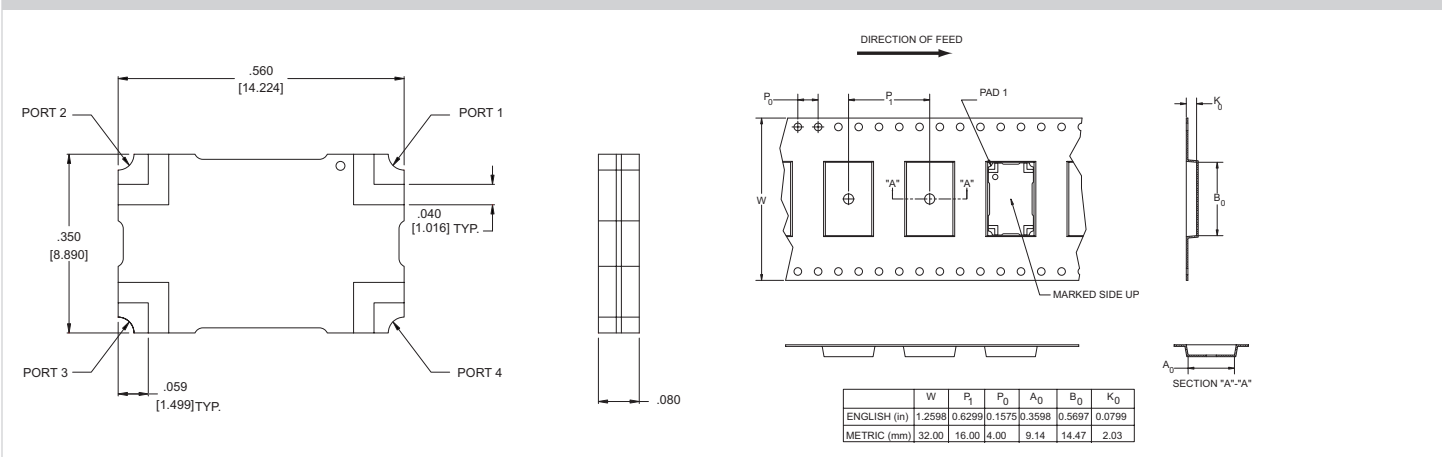
### DESCRIPTION

The Multi-Mix® Zapper® QHDZ series provides a 3 dB 90° coupling with low insertion loss, low VSWR, and high isolation. Accurate phase and amplitude balance make this series ideal for use in IQ networks, power amplifiers, radio transceivers, receiver multicouplers and RF signal distribution and processing equipment.

QHDZ quad hybrids are fusion bonded multilayer stripline devices. The fusion bonding process yields a homogeneous monolithic dielectric structure with reliability, ruggedness, and electrical performance that is superior to conventional adhesive bonding techniques. Applications:

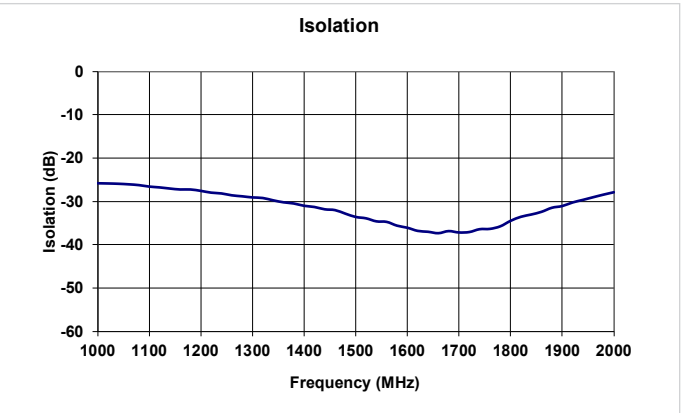
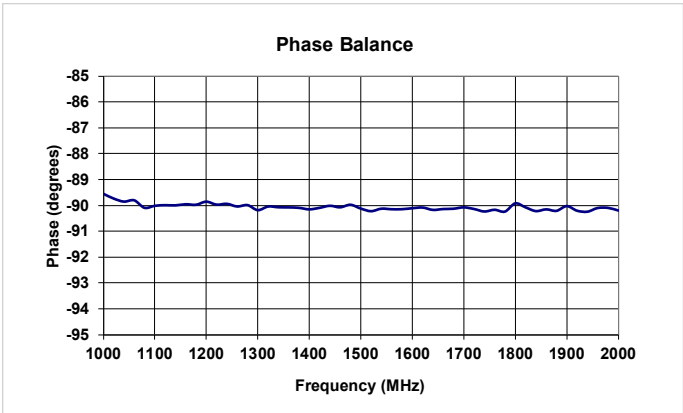
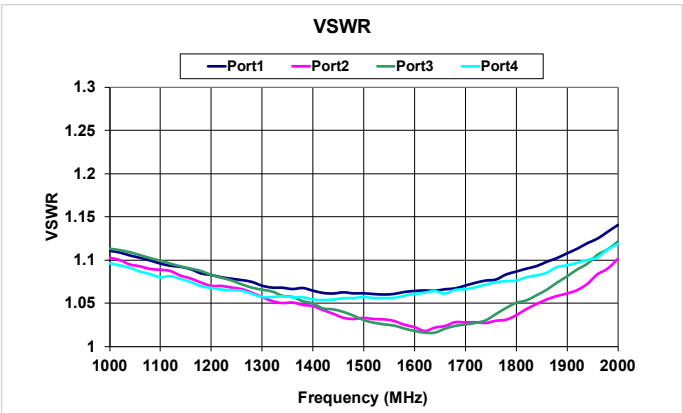
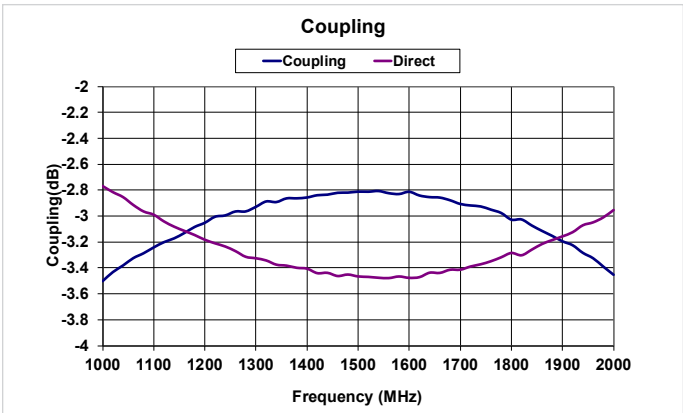
- JTRS

## PACKAGE OUTLINE / TAPE & REEL ORIENTATION

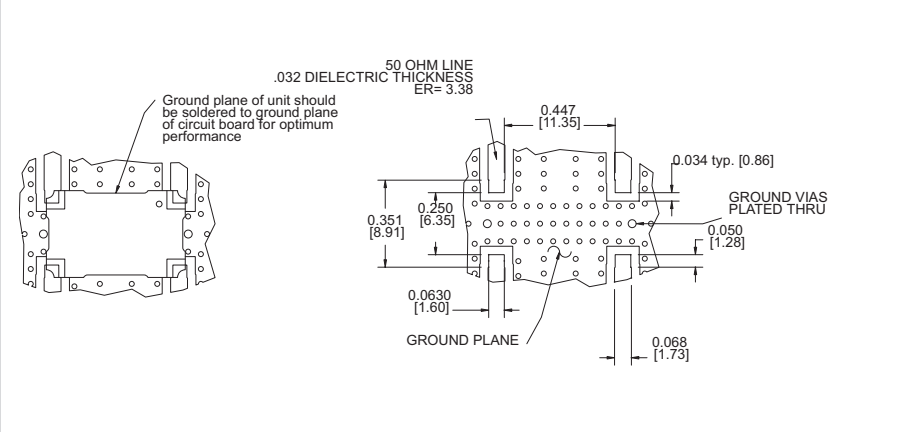


# QUAD HYBRID - QHDZ-2H-1.5G

## PERFORMANCE DATA



## MOUNTING GUIDELINES



## TRUTH TABLE

	1	2	3	4
1	Input	Iso	-90°	0°
2	Iso	Input	0°	-90°
3	-90°	0°	Input	Iso
4	0°	-90°	Iso	Input

DS\_Quad\_QHDZ2H15G\_09172019vv.indd. This revision supersedes all previous releases. All technical information is believed to be accurate, but no responsibility is assumed for errors. We reserve the right to make changes in products or specifications without notice. Copyright © 2019 Crane Electronics, Inc. All rights reserved.

