

# QUAD HYBRID - QHDZ-2H-0.9G

## TECHNICAL FEATURE

### FEATURES

- 0.8 - 1.0 GHz
- High Isolation
- Low Loss
- Excellent Phase / Amplitude Balance
- Surface Mount
- Tape & Reel Available



### PERFORMANCE

Frequency Range.....	800 - 1000, 869 - 964 MHz
.....	925- 960 MHz
Isolation .....	25, 26, 25 dB min.
Insertion Loss .....	0.15, 0.12, 0.12 dB max.
VSWR.....	1.15:1, 1.12:1, 1.13:1 max.
Amplitude Balance .....	±0.20, ±0.14, ±0.14 dB max.
Phase Balance .....	90 ± 2° max.
Input Power .....	225 watts max.
RF Interface.....	Surface mount
Operating Temperature Range .....	-55 to +95°C

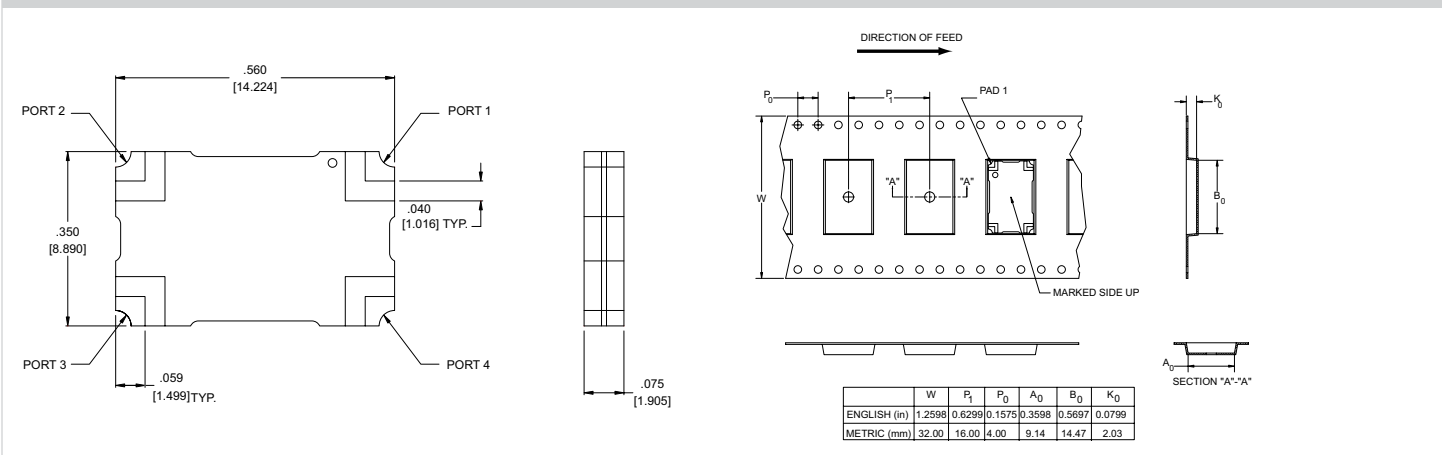
### DESCRIPTION

The Multi-Mix® Zapper® QHDZ series provides a 3 dB 90° coupling with low insertion loss, low VSWR, and high isolation. Accurate phase and amplitude balance make this series ideal for use in IQ networks, power amplifiers, radio transceivers, receiver multicouplers and RF signal distribution and processing equipment.

QHDZ quad hybrids are fusion bonded multilayer stripline devices. The fusion bonding process yields a homogeneous monolithic dielectric structure with reliability, ruggedness, and electrical performance that is superior to conventional adhesive bonding techniques. Applications:

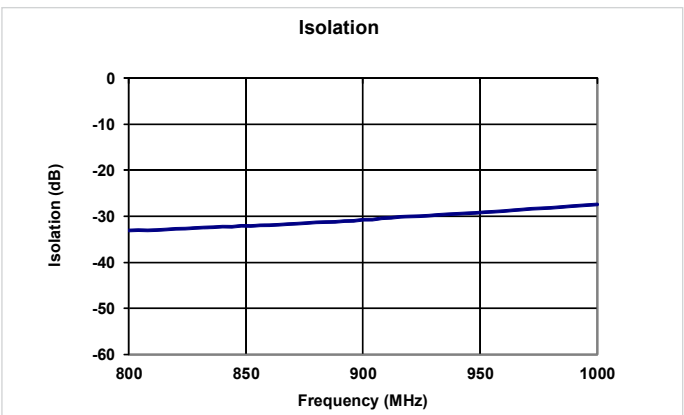
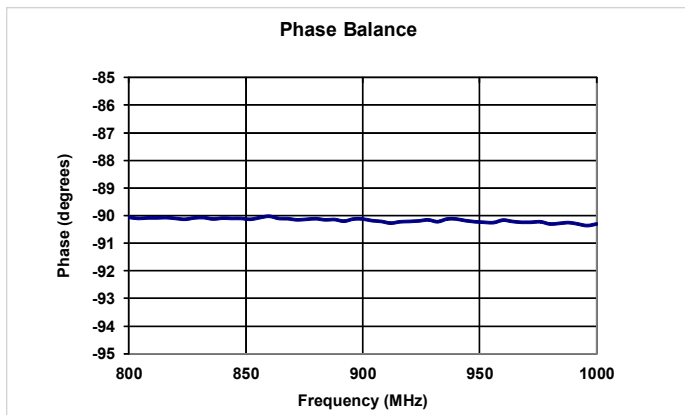
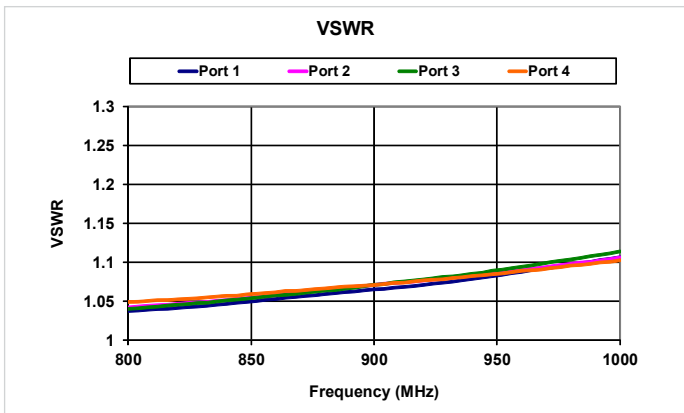
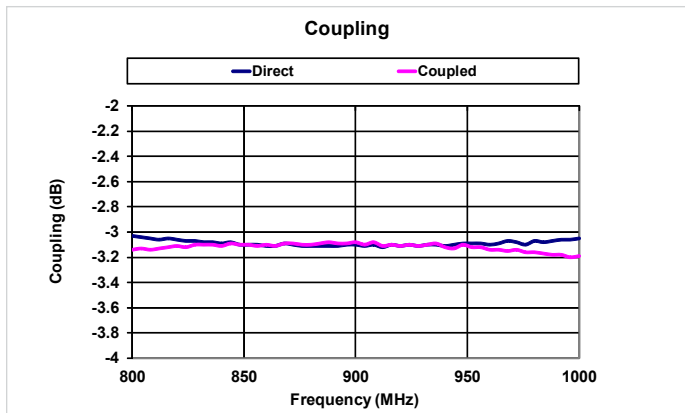
- GSM 850/950 RF subsystems
- Land mobile radio (LMR)
- Radar communications

## PACKAGE OUTLINE / TAPE & REEL ORIENTATION

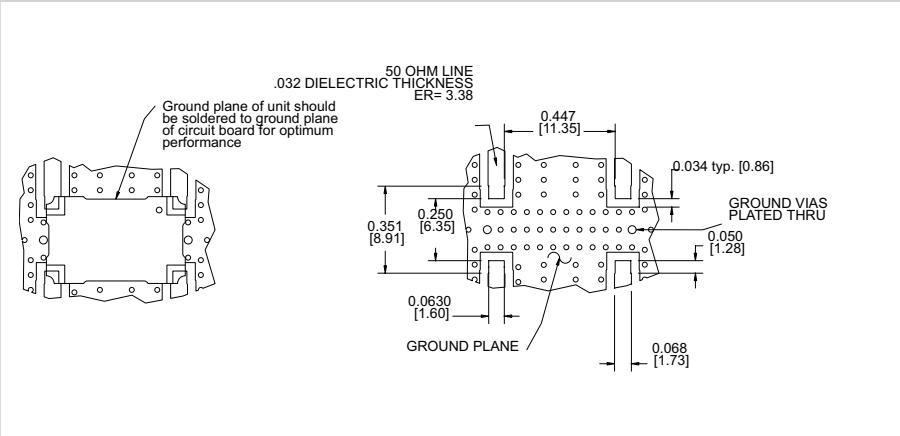


# QUAD HYBRID - QHDZ-2H-0.9G

## PERFORMANCE DATA



## MOUNTING GUIDELINES



## TRUTH TABLE

	1	2	3	4
1	Input	Iso	-90°	0°
2	Iso	Input	0°	-90°
3	-90°	0°	Input	Iso
4	0°	-90°	Iso	Input

DS\_Quad\_QHDZ2H09G\_050405vv.indd. This revision supersedes all previous releases. All technical information is believed to be accurate, but no responsibility is assumed for errors. We reserve the right to make changes in products or specifications without notice. Copyright © 2011 Crane Electronics, Inc. All rights reserved.

