

QUAD HYBRID - QHDZ-2H-0.45G

TECHNICAL FEATURE

FEATURES

- 350 - 525 MHz
- High Isolation
- Low Loss
- Excellent Phase / Amplitude Balance
- Surface Mount
- Tape & Reel Available



PERFORMANCE

Frequency Range.....	410 - 480 MHz
.....	350 - 525 MHz
Isolation	27 dB min.
.....	25 dB min.
Insertion Loss	0.25 dB max.
.....	0.30 dB max.
VSWR.....	1.12:1 max.
.....	1.15:1 max.
Amplitude Balance	±0.20 dB max.
.....	±0.30 dB max.
Phase Balance	90 ± 2° max.
.....	90 ± 3° max.
Input Power	125 watts max.
RF Interface.....	Surface mount
Operating Temperature Range	-55 to +95°C

DESCRIPTION

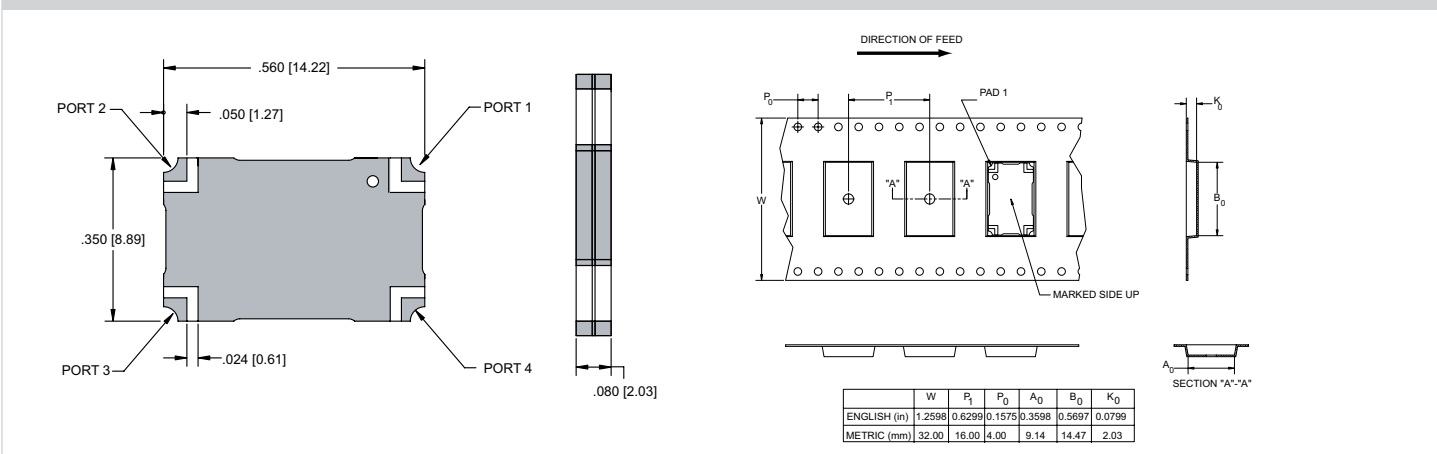
The Multi-Mix® Zapper® QHDZ-2H-0.45G provides a 3 dB 90° coupling with low insertion loss, low VSWR, and high isolation for use in the 350 - 525 MHz range. Accurate phase and amplitude balance make this series ideal for use in IQ networks, power amplifiers, radio transceivers, receiver multicouplers and RF signal distribution and processing equipment.

QHDZ quad hybrids are fusion bonded multilayer stripline devices. The fusion bonding process yields a homogeneous monolithic dielectric structure with reliability, ruggedness, and electrical performance that is superior to conventional adhesive bonding techniques.

Applications:

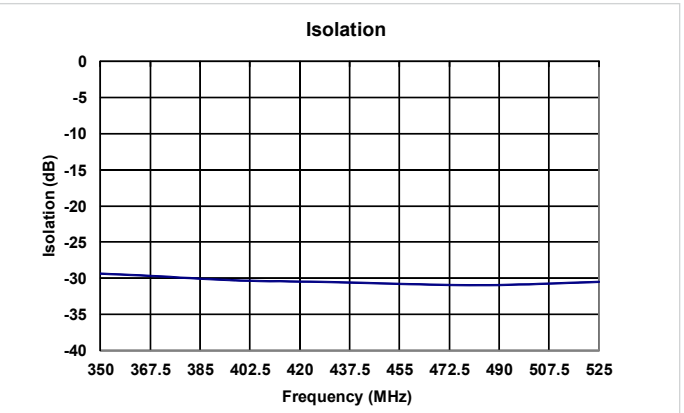
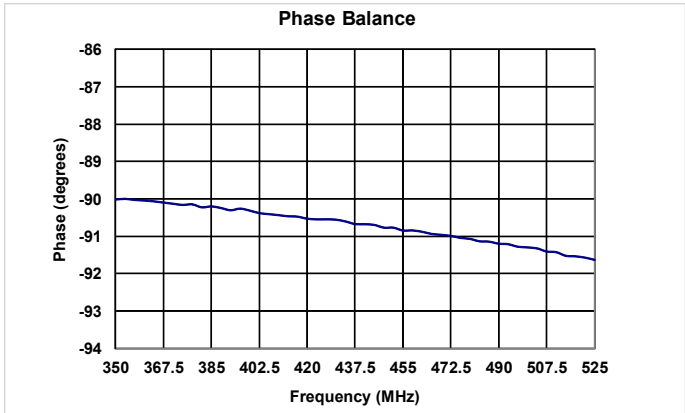
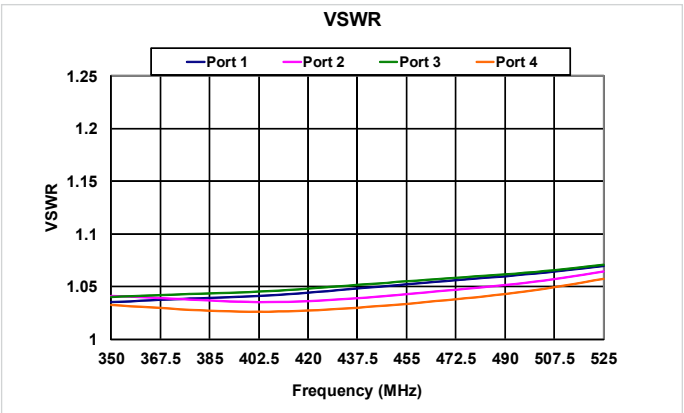
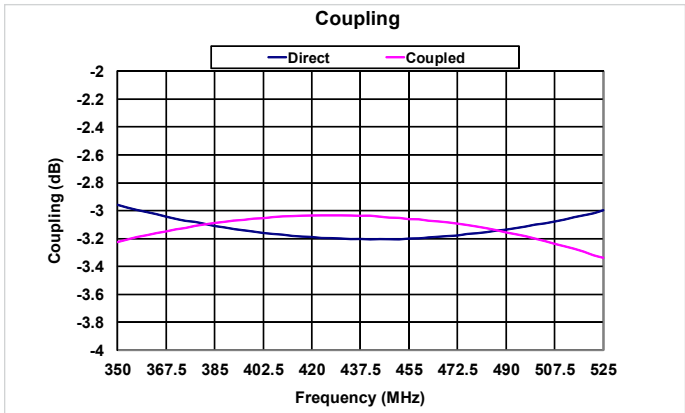
- CDMA 450 base station power amplifiers
- UHF land mobile radio (LMR) base station power amplifiers
- UHF Radar (400-500 MHz)

PACKAGE OUTLINE / TAPE & REEL ORIENTATION

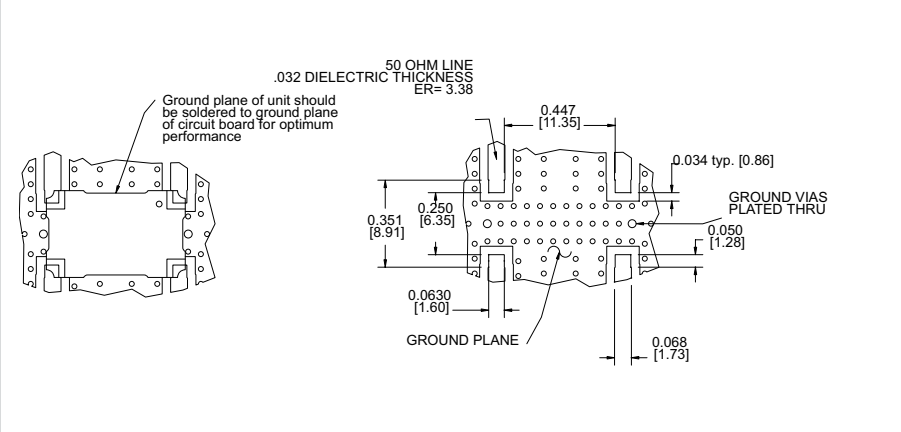


QUAD HYBRID - QHDZ-2H-0.45G

PERFORMANCE DATA



MOUNTING GUIDELINES



TRUTH TABLE

	1	2	3	4
1	Input	Iso	-90°	0°
2	Iso	Input	0°	-90°
3	-90°	0°	Input	Iso
4	0°	-90°	Iso	Input

DS_Quad_QHDZ2H045G_031706.indd. This revision supersedes all previous releases. All technical information is believed to be accurate, but no responsibility is assumed for errors. We reserve the right to make changes in products or specifications without notice. Copyright © 2011 Crane Electronics, Inc. All rights reserved.

