

### TECHNICAL FEATURE

#### FEATURES

- Space Qualified
- 17.5 - 21.5 GHz
- 2 - Way

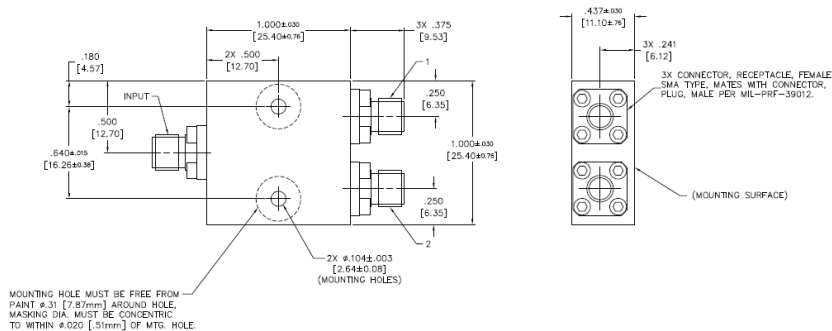
### PRINCIPAL SPECIFICATIONS

Model Number	Frequency Range GHz	Isolation dB Min.	Insertion Loss, dB Max.	Phase Balance Max.	Amplitude Balance dB Max.	VSWR Max.		CW Input, W, Load VSWR out 1.2:1	Weight Max.
						In	Out		
PDM-21-19.5G SQ	17.5 - 21.5	18	0.9	5°	0.25	1.4:1	1.4:1	2	31 g.

### TECHNICAL DESCRIPTION / APPLICATION

The PDM-21-19.5G SQ In-Phase Power Divider covers 17.5 - 21.5 GHz. It uses a wideband stripline design which provides high isolation and low VSWR. This unit has been designed, manufactured, and qualified per Merrimac document CENG-0001, "Standard Design Requirements for Space Qualified Devices."

### PACKAGE OUTLINE



#### NOTES:

1. TOLERANCE ON 3 PLACE DECIMALS  $\pm 0.020$  [.51mm], EXCEPT WHERE NOTED.
2. MAX. IS LARGEST DIMENSION ALLOWED.
3. DIMENSIONS = INCHES [mm]
4. METRIC EQUIVALENTS ARE TO THE NEAREST .01mm
5. EXTERNAL FINISH:  
EXTERIOR SURFACES: FLAT BLACK POLYURETHANE COATING AEROGLAZE Z306 (EXCEPT MOUNTING SURFACE TOP MOUNTING HOLE AREA AND AREA AROUND VENT HOLES AND VENT SLOT). MOUNTING AND UNPAINTED SURFACE FINISH: CHEMICAL FILM PER MIL-DTL-5541, CLASS 3. CONNECTOR FINISH: PASSIVATED.
6. WEIGHT: 1.09 OZ. [31g] MAX.