

DIRECTIONAL COUPLER - CSDZ-10SH-2.1G

TECHNICAL FEATURE

FEATURES

- 1.9 - 2.3 GHz
- High Power
- Low Loss
- Low VSWR
- Surface Mount
- Tape & Reel



PERFORMANCE

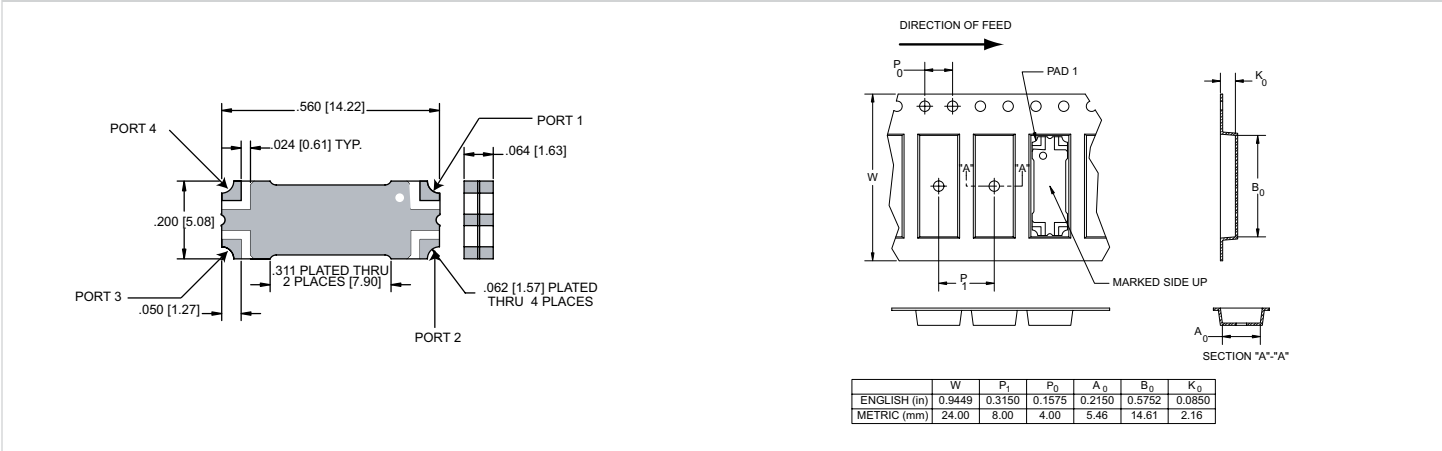
Frequency Range.....	1.9 - 2.3 GHz
Mean Coupling.....	10.0 ± 0.5 dB
Insertion Loss.....	0.14 dB max.
VSWR.....	1.17:1 max.
Frequency Sensitivity.....	±0.10 dB max.
Directivity.....	22 dB min.
Average Power.....	150 watts max.
Size.....	0.56 x 0.20 x 0.064 inches
Weight.....	0.6g / 0.02 oz.
RF Interface.....	Surface mount
Operating Temperature Range.....	-55 to 95°C

DESCRIPTION

The Multi-Mix® Zapper® CSDZ-SH series provides a 10 dB coupler with low insertion loss, low VSWR, and high directivity. Accurate coupling factors make them ideal for applications involving power amplifiers, signal distribution and processing.

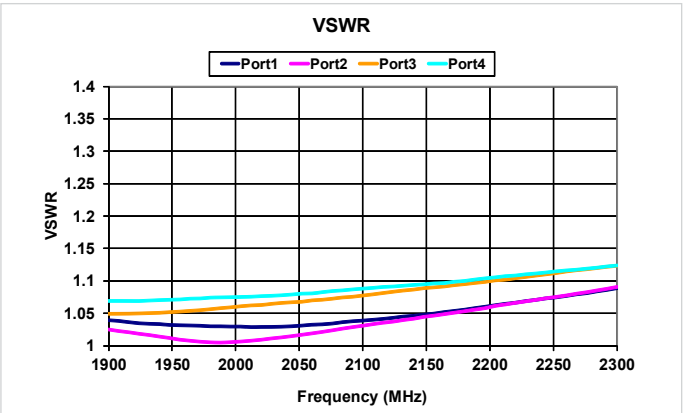
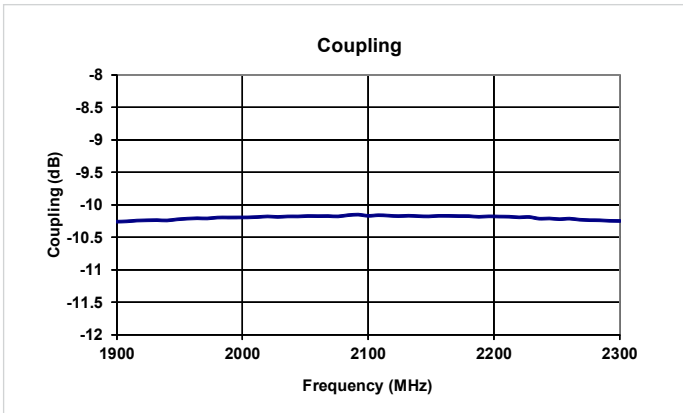
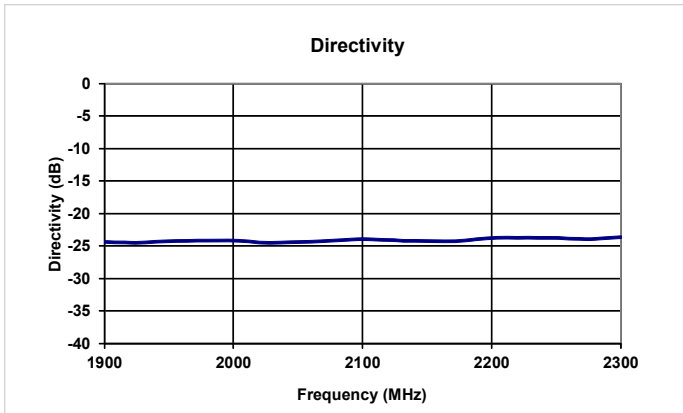
CSDZ-SH Directional Couplers are fusion bonded multilayer stripline assemblies. The fusion bonding process yields a homogeneous monolithic dielectric structure with reliability, ruggedness, and electrical performance that is superior to conventional adhesive bonding techniques.

PACKAGE OUTLINE / TAPE & REEL ORIENTATION

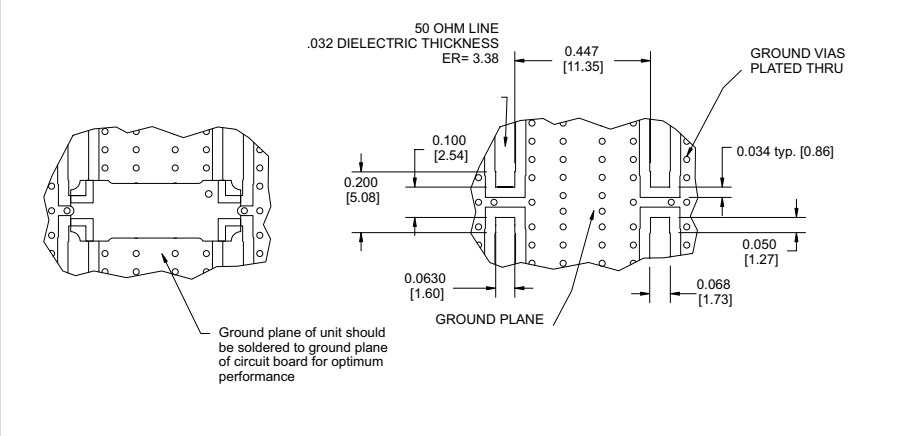


DIRECTIONAL COUPLER - CSDZ-10SH-2.1G

PERFORMANCE DATA



MOUNTING GUIDELINES



TRUTH TABLE

	1	2	3	4
1	Input	Coupled	Isolated	Out
2	Coupled	In	Out	Isolated
3	Isolated	Out	Input	Coupled
4	Out	Isolated	Coupled	Input