

TECHNICAL FEATURE

FEATURES

- Space Qualified
- 0.65 - 1.175 GHz

PRINCIPAL SPECIFICATIONS

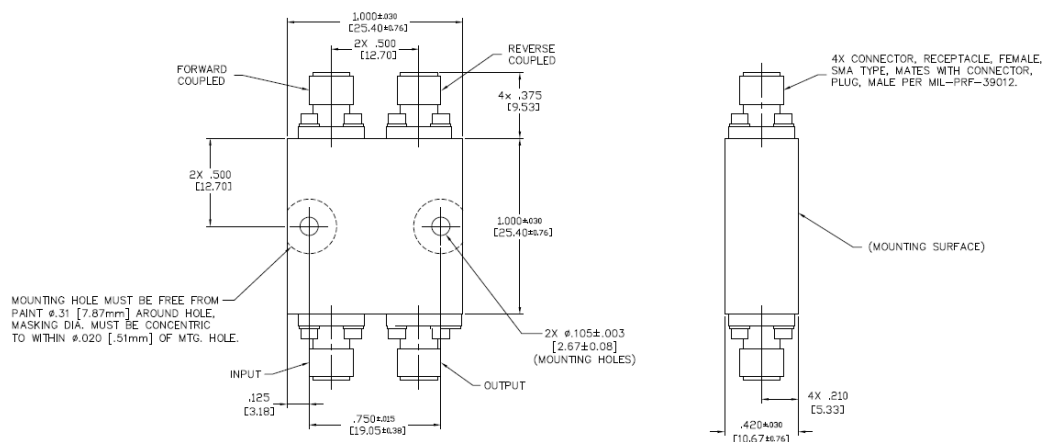
Model Number	Frequency Range GHz	Frequency Sensitivity dB Max.	Coupling dB	Insertion Loss, dB Max.	Directivity dB Min.	VSWR Main Max.	VSWR Coupled Max.	CW Power Rating Main Line	Weight Max.
CSM-7-0.912G SQ	0.65 - 1.175	+ / - 0.25	7 +/- 0.5	1.70	18	1.38:1	1.38:1	1.0 Watts	28 g.

Specifications are only applicable with input signal at Input

TECHNICAL DESCRIPTION / APPLICATION

The CSM-7-0.912G SQ directional coupler covers 0.65 - 1.175 GHz with a special lumped element design. This offers low transmission loss and excellent VSWR. This unit has been designed, manufactured and qualified per Merrimac document CENG-0001, "Standard Design Requirements for Space Qualified Devices."

PACKAGE OUTLINE



NOTES:

1. TOLERANCE ON 3 PLACE DECIMALS ±.020 [0.51mm] EXCEPT WHERE NOTED.
2. MAX. IS LARGEST DIMENSION ALLOWED.
3. DIMENSIONS = INCHES [mm]
4. METRIC EQUIVALENTS ARE TO THE NEAREST .01mm
5. EXTERNAL FINISH:
EXTERIOR SURFACES: FLAT BLACK POLYURETHANE COATING
AEROGLAZE Z306 (EXCEPT MOUNTING SURFACE TOP MOUNTING HOLE AREA AND AREA AROUND VENT HOLES AND VENT SLOT).
MOUNTING AND UNPAINTED SURFACE FINISH:
CHEMICAL FILM PER MIL-DTL-5541, CLASS 3.
CONNECTOR FINISH: PASSIVATED.
6. WEIGHT: 0.99 OZ. [28g] MAX.