

### TECHNICAL FEATURE

#### FEATURES

- Space Qualified
- 1.985 - 2.015 GHz
- Forward and Reverse Coupling

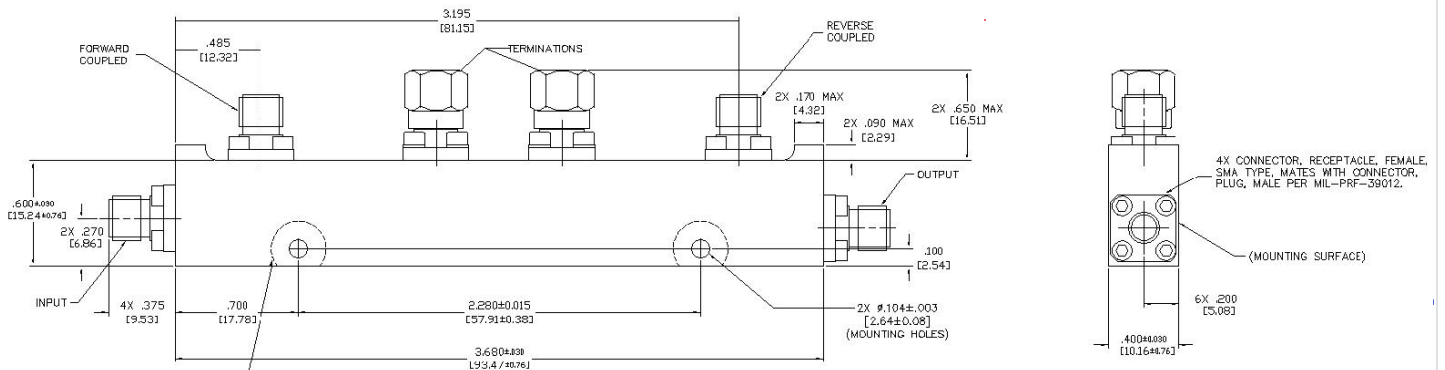
### PRINCIPAL SPECIFICATIONS

Model Number	Frequency Range GHz	Frequency Sensitivity dB Max.	Coupling dB	Insertion Loss, dB Max.	Directivity dB Min.	VSWR Main Max.	VSWR Coupled Max.	CW Power Rating Main Line	Weight Max.
CDM-30-2.0G SQ	1.985 - 2.015	± 0.8	30 +/- 1.25	0.4	22	1.22:1	1.22:1	20 Watts	68g.

### TECHNICAL DESCRIPTION / APPLICATION

The CDM-30-2.0G SQ dual directional coupler covers 1.985 - 2.015 GHz with a stripline design. This offers low transmission loss and excellent VSWR. This unit has been designed, manufactured and qualified per Merrimac document CENG-0001, "Standard Design Requirements for Space Qualified Devices."

### PACKAGE OUTLINE



#### NOTES:

1. TOLERANCE ON 3 PLACE DECIMALS ±.020 [.51mm] EXCEPT WHERE NOTED.
2. MAX. IS LARGEST DIMENSION ALLOWED.
3. DIMENSIONS = INCHES [mm]
4. METRIC EQUIVALENTS ARE TO THE NEAREST .01mm
5. EXTERNAL FINISH:  
EXTERIOR SURFACES: FLAT BLACK POLYURETHANE COATING  
AEROGLAZE Z306 (EXCEPT MOUNTING SURFACE TOP MOUNTING HOLE AREA AND AREA AROUND VENT HOLES AND VENT SLOT).  
MOUNTING AND UNPAINTED SURFACE FINISH:  
CHEMICAL FILM PER MIL-DTL-5541, CLASS 3.  
CONNECTOR FINISH: PASSIVATED.
6. WEIGHT: 2.40 OZ. [68g] MAX.