

# DIRECTIONAL COUPLER - CWM-10-6G SQ

## TECHNICAL FEATURE

### FEATURES

- Space Qualified
- 2.5 - 10.0 GHz



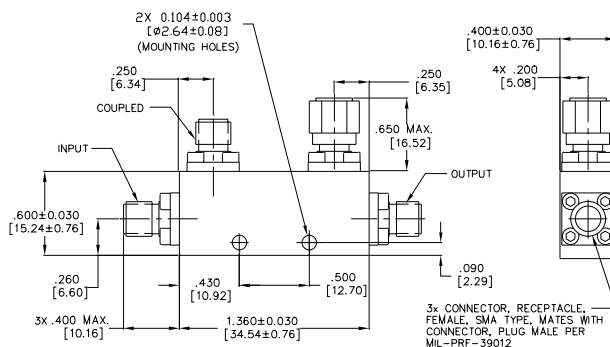
### PERFORMANCE

Frequency Range.....	2.5 - 10.0 GHz
Coupling .....	10 ± 1.0 dB
Insertion Loss .....	0.75 dB max.
Directivity.....	16 dB min.
VSWR.....	1.35:1 main max.
.....	1.35:1 coupled max.
Frequency Sensitivity .....	±0.60 dB max.
CW Power Rating Main Line.....	10 W

### DESCRIPTION

The CWM-10-6G SQ Directional Coupler covers 2.5 - 10.0 GHz with a stripline design. This offers low transmission and excellent VSWR. This unit has been designed, manufactured and qualified per Merrimac document CENG-0001, "Standard Design Requirements for Space Qualified Devices".

## PACKAGE OUTLINE



- NOTES:
1. TOLERANCE ON 3 PLACE DECIMALS ±.020 [.51mm] EXCEPT AS NOTED.
  2. MAX. IS LARGEST DIMENSION ALLOWED.
  3. DIMENSIONS=INCHES [mm]
  4. METRIC EQUIVALENTS ARE TO THE NEAREST .01mm.
  5. WEIGHT: .98 OZ. [28g] MAX.

