

TECHNICAL FEATURE

FEATURES

- Space Qualified
- 4.5 - 7.5 GHz



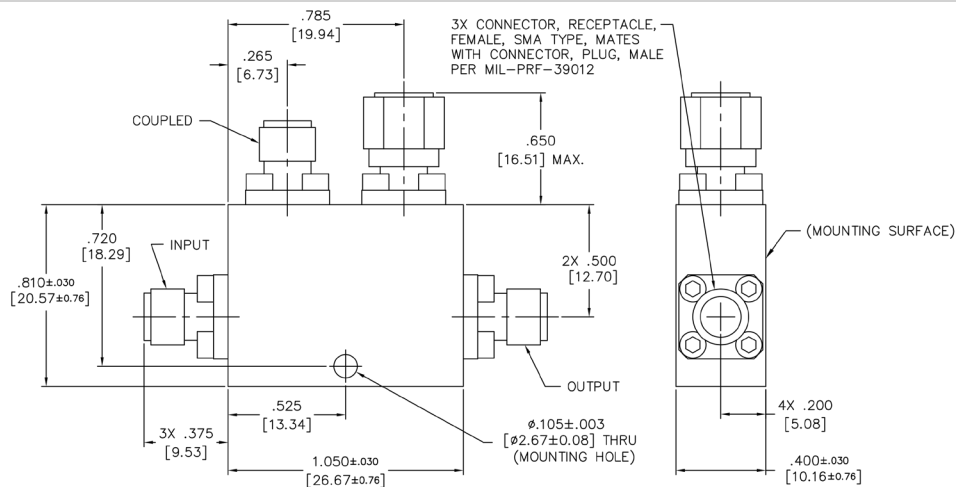
PRINCIPAL SPECIFICATIONS

Model Number	Frequency Range GHz	Frequency Sensitivity dB Max.	Coupling dB	Insertion Loss, dB Max.	Directivity dB Min.	VSWR Main Max.	VSWR Coupled Max.	CW Power Rating Main Line	Weight Max.
CSM-30-6G SQ	4.5 - 7.5	+ / - 0.75	30 + / - 1	0.3	20	1.2:1	1.2:1	1 Watt	30 g

TECHNICAL DESCRIPTION / APPLICATION

The CSM-30-6G SQ directional coupler covers 4.5 - 7.5 GHz with a stripline design. This offers low transmission loss and excellent VSWR. This unit has been designed, manufactured and qualified per Merrimac document CENG-0001, "Standard Design Requirements for Space Qualified Devices."

PACKAGE OUTLINE



NOTES:

1. TOLERANCE ON 3 PLACE DECIMALS ± 0.020 [.51 mm] EXCEPT AS NOTED.
2. DIMENSIONS = INCHES [mm]
3. METRIC EQUIVALENTS ARE TO THE NEAREST .01mm.