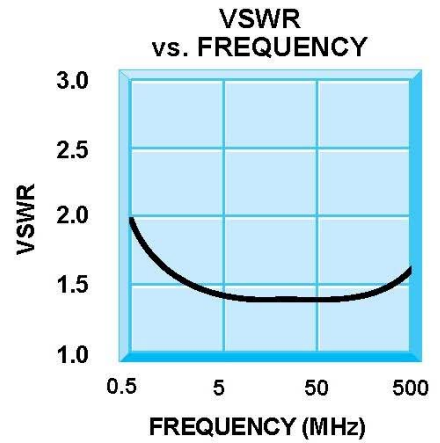
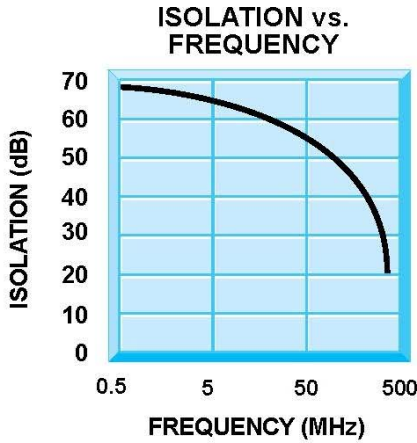
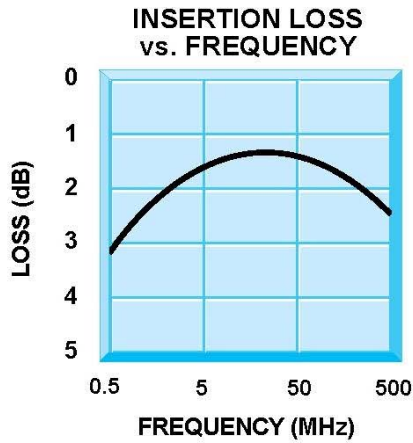


ISD-9210 Series (SPDT)

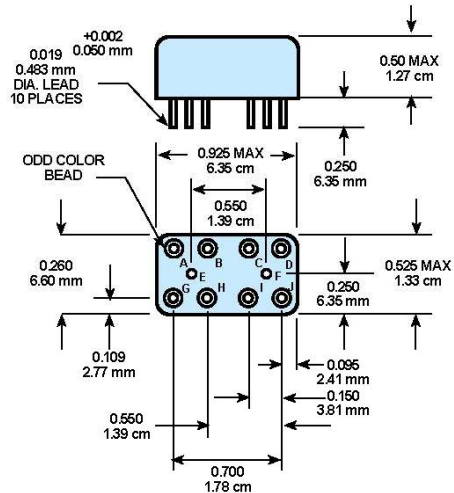
Balanced Pin Diode Switches with Integral Drivers



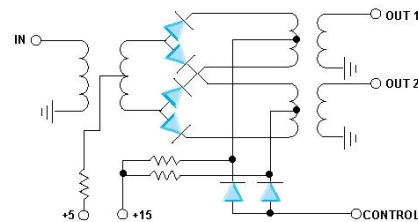
Guaranteed Specifications (-54° to +85°C)

Frequency Ranges	0.5 to 200 MHz 2 to 100 MHz 20 to 400 MHz
Isolation	45 dB Min.
Insertion Loss	2.0 dB Max.
VSWR	1.6:1 Max.
Switching Speed	200 nanoseconds Max.
Impedance	50 Ohms
DC Power Requirement	+15V at 15 mA +5V at 50 mA
Control Logic Level	on state controlled by logic level high
Transient Feedthrough	<150 mV Peak
ISD-9210	0.05 - 200 MHz
ISD-9211	2 - 100 MHz
ISD-9212	20 - 400 MHz

Mechanical Outline



Functional Schematic



STC Microwave Systems – www.craneae.com
 28 Tozer Road • Beverly, MA 01915
 phone: 978-524-7200 • email: electronics@craneae.com

Revision ISD-9210 2005 08252005

