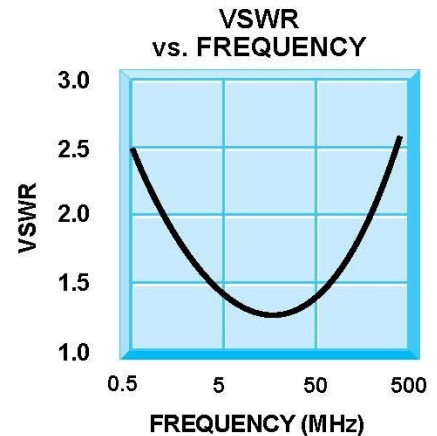
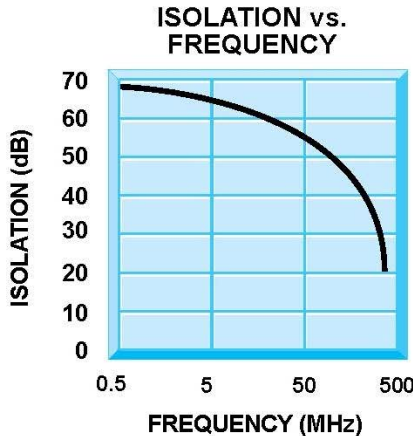
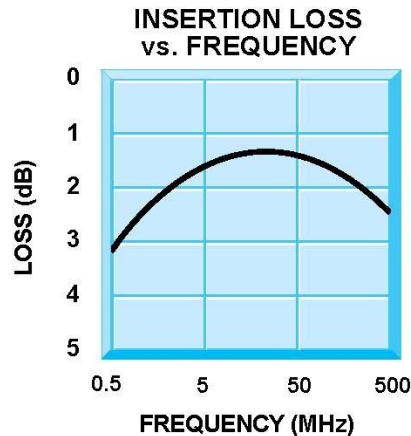


# ISD-9200 SERIES (SPST) BALANCED PIN DIODE SWITCHES WITH INTEGRAL DRIVERS

## ISD-9200 Series (SPDT)

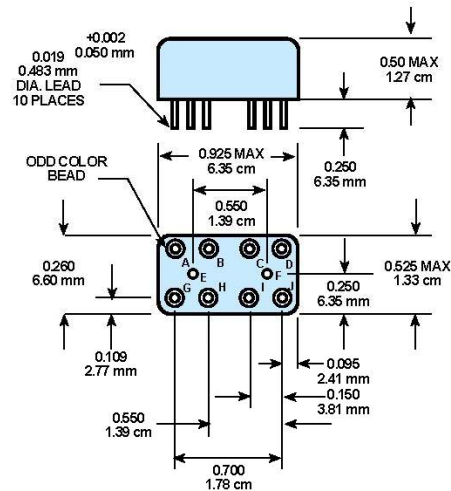
Balanced Pin Diode Switches with Integral Drivers



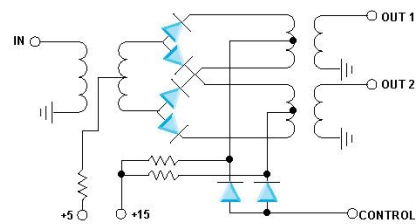
### Guaranteed Specifications (-54° to +85°C)

Frequency Range	2 to 100 MHz 20 to 400 MHz
Isolation	40 dB Min.
Insertion Loss	2.0 dB Max.
VSWR	1.5:1 Max.
Switching Speed	20 nanoseconds
Impedance	50 Ohms
DC Power Requirement	+15V at 15 mA +5 V at 50 mA
Control TTL Logic Level	on state selected by high logic level
Transient Feedthrough	<150 mV Peak
ISD-9200	2-100 MHz
ISD-9201	20-400 MHz

### Mechanical Outline



### Functional Schematic



STC Microwave Systems – [www.cranae.com](http://www.cranae.com)  
 28 Tozer Road • Beverly, MA 01915  
 phone: 978-524-7200 • email: [electronics@cranae.com](mailto:electronics@cranae.com)

Revision ISD-9200 2005 08252005

STC MICROWAVE SYSTEMS - OLEKTRON  
 A CRANE CO. COMPANY

