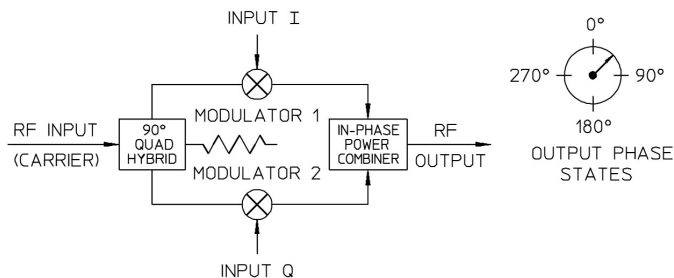


# VECTOR I&Q MODULATOR - VMF-2E-160 SQ

## TECHNICAL FEATURE

### FEATURES

- Space Qualified
- High Accuracy
- Hi-Rel Flatpack



### PERFORMANCE

RF Input Frequency.....	160 MHz
RF Input Power .....	+10 dB nom., +13 dB max.
I&Q Input Power Level .....	0 dBm max.
I&Q Bandwidth .....	DC - 40 MHz
Conversion Loss.....	10 dB typ., 12 dB max. (below Modulation Input)
VSWR RF/LO .....	1.3:1 typ., 1.5:1 max.
Impedance.....	50 Ohm nom.
Modulation Accuracy (measured @ 4 quadrants, 0 dBm input)	
Phase Balance .....	± 5°
Amplitude Balance .....	1.0 dB
Operating Temperature .....	-55° to +85° C

### DESCRIPTION

I & Q modulators are integrated devices that produce linear phase modulation of an RF carrier. In the VMF Series, specially optimized circuits are used to provide superior performance across very wide bandwidths and high data rates. This has been designed, manufactured and qualified per Merrimac document CENG-0001, "Standard Design Requirements for Space Qualified Devices".

### PACKAGE OUTLINE

