

PDS-20-600 – 0° POWER DIVIDERS/COMBINERS

TECHNICAL FEATURE

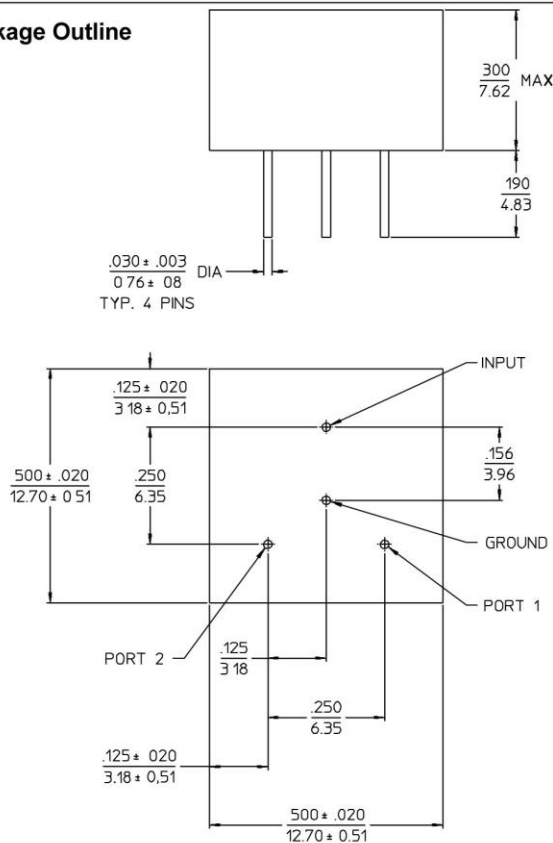
FEATURES

- 50 to 1000 MHz
- 2-way
- Excellent Phase & Amplitude Balance
- Low Insertion Loss
- Broadband
- PC Hdr

PRINCIPAL SPECIFICATIONS

Model Number	Frequency Range, MHz	Freq., Perform., MHz	Isolation, dB		Insertion Loss, dB		Phase Balance, °		Amplitude Bal., dB		VSWR, (In/Output)		Internal Load Dissip.
			Min.	Typ.	Max.	Typ.	Max.	Typ.	Max.	Typ.	Max.	Typ.	
PDS-20-600	50 - 1000	50 - 150	15	25	1.0	0.7	2°	1°	0.3	0.1	1.8:1	1.5:1	125 mW
		150 - 1000	25	30	1.0	0.7	2°	1°	0.3	0.1	1.4:1	1.2:1	

Package Outline



NOTES: 1. Tolerance on 3 place decimals $\pm 0.10(.25)$ except as noted.
2. Dimensions in inches over millimeters.

GENERAL SPECIFICATIONS

Coupling:	– 3 dB nom.
Impedance:	50 Ω nom.
CW Input Power:	1 Watt max.
	(When used as a divider with 1.2:1 VSWR _{out})
Package Type:	Square Header
Weight:	0.32 oz. (9 g)
Operating Temperature:	– 55° to +85°C

General Notes:

1. The PDS-20-600 2-way Power Divider/Combiner covers 50 to 1,000 MHz using a special lumped element design to reduce the size making it suitable for applications requiring high performance in a small package.
2. For maximum reliability in a PC package, Merrimac recommends the use of a Meri-Pac™ equivalent PDP-2N series which is hermetically sealed with a welding process.

22Feb96

Crane Aerospace & Electronics

Microwave Solutions – Merrimac Industries
41 Fairfield Place, West Caldwell, NJ 07006
+ 1.973.575.1300 ext. 1309 • mw@crane-eg.com
www.craneeae.com/mw

PDS20.doc. This revision supersedes all previous releases. All technical information is believed to be accurate, but no responsibility is assumed for errors. We reserve the right to make changes in products or specifications without notice. Copyright © 2013 Crane Electronics, Inc. All rights reserved.

