

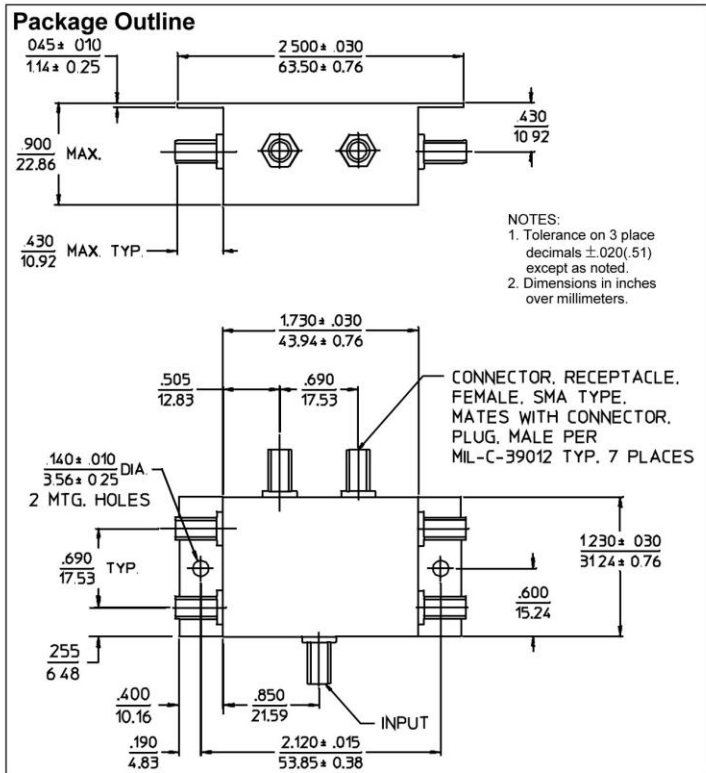
PDM-60 SERIES – 0° POWER DIVIDERS/COMBINERS

TECHNICAL FEATURE

FEATURES

- 1 to 500 MHz
- 6-way
- Wideband Lumped Element Design
- Low Insertion Loss
- Compact SMA Package

| PRINCIPAL SPECIFICATIONS | | | | | | | | | | | |
|---------------------------------|----------------------|----------------|------|------------------------|------|----------------|------|---------------------|------|-------------|-------|
| Model Number | Frequency Range, MHz | Isolation, dB, | | Amplitude Balance, dB, | | Phase Balance, | | Insertion Loss, dB, | | VSWR In/Out | |
| | | Min. | Typ. | Max. | Typ. | Max. | Typ. | Max. | Typ. | Max. | Typ. |
| PDM-60-50 | 1 - 100 | 25 | 30 | 0.4 | 0.2 | 4° | 2° | 1.0 | 0.8 | 1.3:1 | 1.2:1 |
| PDM-60-260 | 20 - 500 | 24 | 30 | 0.6 | 0.3 | 5° | 3° | 1.7 | 1.0 | 1.4:1 | 1.2:1 |



General Notes:

1. The PDM-60 series of 6-way In-Phase, Power Dividers/Combiners covers 1 to 500 MHz using a lumped element design for broad bandwidth and high performance.

| GENERAL SPECIFICATIONS | |
|-------------------------------|---|
| Impedance: | 50 Ω nom. |
| CW Input Power: | 2 Watts max. <small>(When used as divider with 1.2:1 VSWR_{out})</small> |
| Internal Load Dissipation: | 250 mW max. |
| Weight, nominal: | 3 oz. (84 g) |
| Operating Temperature: | - 55° to +85°C |

