

# PDM-40 SERIES – 0° POWER DIVIDERS/COMBINERS

## TECHNICAL FEATURE

### FEATURES

- 0.5 to 18 GHZ
- 3-way
- Excellent Phase & Amplitude Balance
- Low Insertion Loss
- High Isolation
- SMA

<b>PRINCIPAL SPECIFICATIONS</b>													
Model Number	Freq. Range, MHz	Freq. Perform., MHz	Isolation, Insertion				Phase Balance		Amplitude Balance, dB		VSWR (In/Output)		†Input Power, Max.
			dB, Min.	dB, Typ.	dB, Max.	Loss, dB, Typ.	Max.	Typ.	Max.	Typ.	Max.	Typ.	
PDM-40-10	.05 - 20	.05 - 20	30	33	1.0	0.8	2°	1°	0.2	0.1	1.3:1	1.15:1	1 W
PDM-40-100	1 - 200	1 - 100	30	35	1.0	0.5	3°	1°	0.3	0.1	1.3:1	1.15:1	2 W
		100 - 200	20	25	1.2	0.8	5°	2°	0.5	0.2	1.5:1	1.3:1	
PDM-40-250	10 - 500	10 - 500	25	30	1.25	0.8	4°	2°	0.4	0.2	1.5:1	1.3:1	2 W

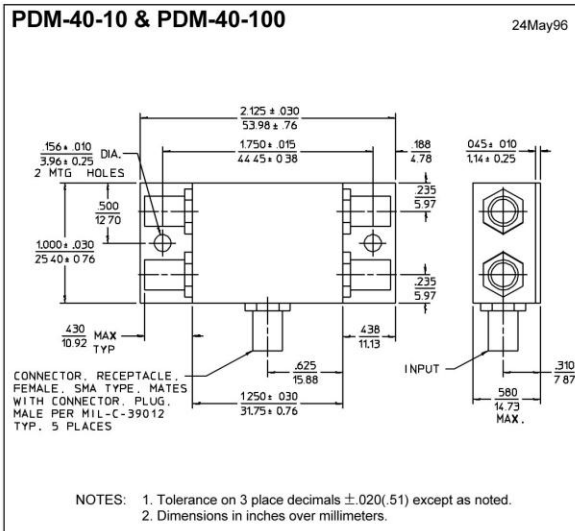
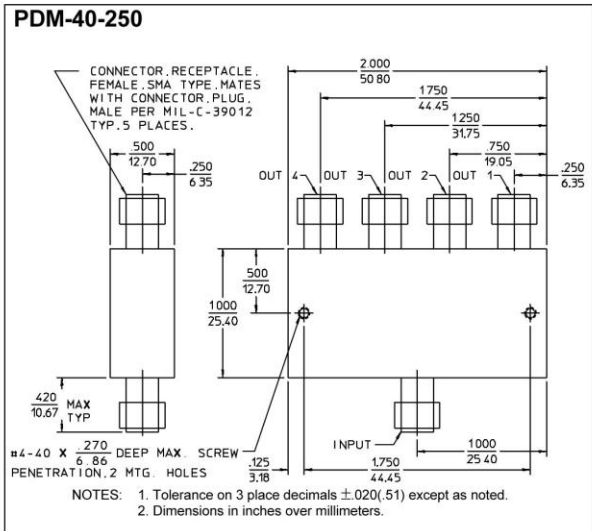
†CW input power when used as divider with 1.2:1 VSWR<sub>out</sub>

**General Notes:**

1. The PDM-40 series of 4-way in-phase, side output, power dividers/combiners cover 50 kHz to 500 MHz using a high performance lumped element design to maximize the bandwidth.

**GENERAL SPECIFICATIONS**

Coupling: – 6 dB nom.  
 Impedance: 50 Ω nom.  
 Internal Load Dissipation: 250 mW max.  
 Weight, nominal: 1 oz (28 g)  
 Operating Temperature: – 55° to + 85°C



**Crane Aerospace & Electronics**  
 Microwave Solutions – Merrimac Industries  
 41 Fairfield Place, West Caldwell, NJ 07006  
 + 1.973.575.1300 ext. 1309 • [mw@crane-eg.com](mailto:mw@crane-eg.com)  
[www.cranee.com/mw](http://www.cranee.com/mw)



PDM40.doc. This revision supersedes all previous releases. All technical information is believed to be accurate, but no responsibility is assumed for errors. We reserve the right to make changes in products or specifications without notice. Copyright © 2013 Crane Electronics, Inc. All rights reserved.