

CBN & CCN SERIES, DIRECTIONAL COUPLERS

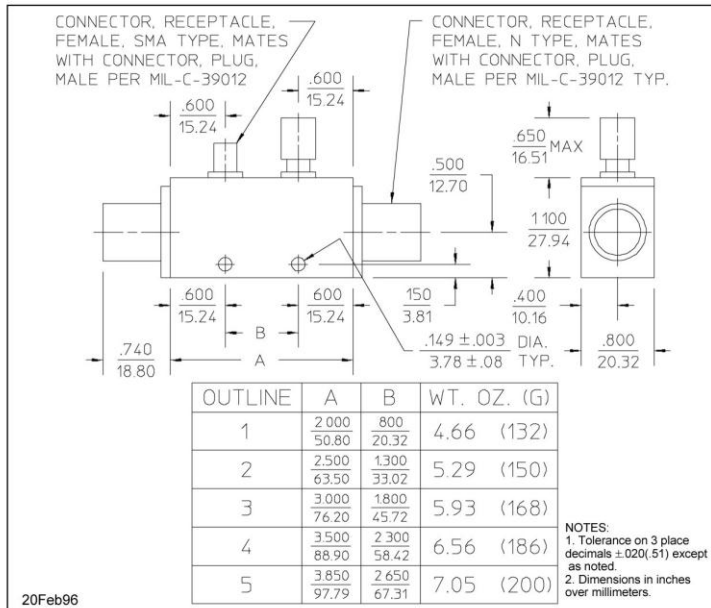
TECHNICAL FEATURE

FEATURES

- 1 to 12 GHz
- High power
- Octave & multi-octave models
- 30 or 35 dB coupling
- N-connector

PRINCIPAL SPECIFICATIONS							
Model Number	Frequency Range, GHz	Nominal Coupling, α dB	Frequency Sensitivity, dB, Max.	Directivity, dB, Min.	*Insertion Loss, dB, Max.	VSWR, Main Line, Max.	Outline Ref.
CBN-30M-1.5G	1.0 - 2.0	30 \pm 1	\pm 0.75	18	0.2	1.15:1	4
CBN-30M-3G	2.0 - 4.0	30 \pm 1	\pm 0.75	18	0.2	1.15:1	2
CBN-30M-4G	2.6 - 5.2	30 \pm 1	\pm 0.75	18	0.2	1.20:1	2
CBN-30M-6G	4.0 - 8.0	30 \pm 1	\pm 0.75	18	0.2	1.30:1	1
CBN-30M-8G	5.0 - 11.0	30 \pm 1	\pm 0.50	15	0.2	1.30:1	1
CBN-30M-9G	7.0 - 11.0	30 \pm 1	\pm 0.50	16	0.2	1.30:1	1
CCN-30M-2G	1.0 - 4.0	30 \pm 1	\pm 0.60	15	0.2	1.15:1	5
CCN-30M-3G	1.5 - 4.5	30 \pm 1	\pm 0.60	18	0.2	1.20:1	4
CCN-30M-5G	2.0 - 8.0	30 \pm 1	\pm 0.60	16	0.2	1.30:1	3
CCN-35M-6G	1.0 - 11.0	35 \pm 1.5	\pm 1.50	15	0.2	1.30:1	5
CCN-30M-8G	4.0 - 12.0	30 \pm 1	\pm 0.60	15	0.2	1.30:1	2

α Coupling is referenced to the input and includes frequency sensitivity * Insertion Loss including Coupling "Loss"



GENERAL SPECIFICATIONS

Peak Power: 10 kW max.
 CW Input: 600 W max.
 Impedance: 50 Ω nom.
 Operating Temperature: -55° to +85°C
 Other Coupling Values: Available
 Other Frequency Bands: Available

General Notes:

1. The octave band CBN series and multi-octave CCN series of high power Directional Couplers are designed to monitor signals with minimal perturbation to the main line. Each coupler uses air-line coupling technology for simple reliable operation. They are well suited to transmitter carrier power monitoring, leveling and VSWR protection circuits.
2. These units comply with MIL-C-15370 and can be supplied screened for compliance with additional specifications you designate for military and aerospace applications requiring higher reliability.

Crane Aerospace & Electronics
 Microwave Solutions – Merrimac Industries
 41 Fairfield Place, West Caldwell, NJ 07006
 + 1.973.575.1300 ext. 1309 • mw@crane-eg.com
www.cranee.com/mw

