

C-BAND SWITCH MATRIX

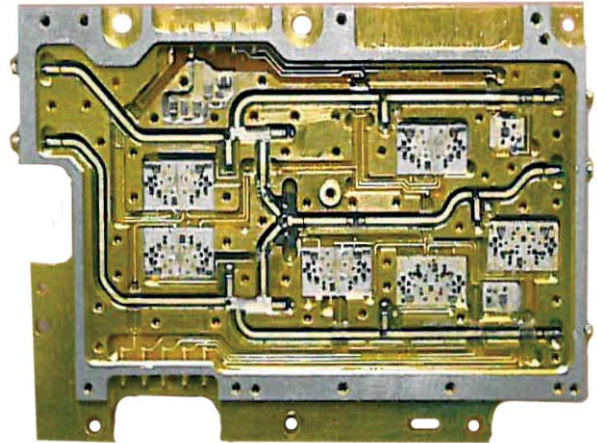
TECHNICAL FEATURE

Features

- Highly Integrated Construction
- Multiple Functionality
- High-reliability Hermetic Construction

Performance

Operating Frequency.....	C-Band
Insertion Loss (J1-J4,(J2-J4)	<7dB max
Insertion Loss Balance.....	+/-1db @any frequency between any two paths
Input Power	+10 dBm nominal
Isolation (each switch on/off).....	55dB min.
VSWR.....	1.5:1 max
Switching Speed.....	<0.5 ms
Unit Control	TTL single-ended
Power Supply	+9 VDC @250 mA max-8 VDC@ 150 mA max
RF Connectors	GPPO Blind Mate
Operating Temperature Range	-10 to +65°C
Package Size	3.5" x 2.4" x 0.5"



Description

This miniature switch matrix is utilized to route two input signals between a single output. Additionally, test paths and built-in test functions are included. The device is built using high reliability, chip and wire techniques and hermetically sealed aluminum housing.

