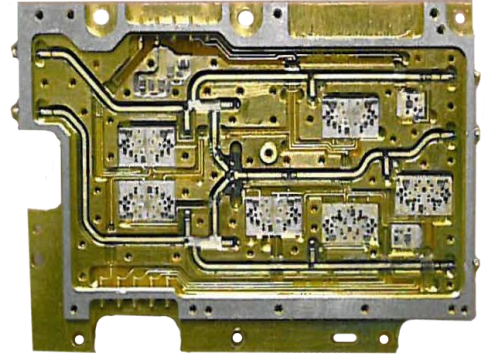


# C-BAND SWITCH MATRIX

## TECHNICAL FEATURE

### FEATURES

- Highly Integrated Construction
- Multiple Functionality
- High-reliability Hermetic Construction



## PERFORMANCE

|                                      |                    |
|--------------------------------------|--------------------|
| Operating Frequency .....            | C-Band             |
| Insertion Loss (J1-J4,(J2-J4) .....  | <7dB max           |
| Insertion Loss Balance .....         | +/-1db @any        |
| .....frequency between any two paths |                    |
| Input Power .....                    | +10 dBm nominal    |
| Isolation (each switch on/off .....  | 55dB min.          |
| VSWR.....                            | 1.5:1 max          |
| Switching Speed .....                | <0.5 ms            |
| Unit Control .....                   | TTL single-ended   |
| Power Supply .....                   | +9 VDC @250 mA max |
| .....                                | -8 VDC@ 150 mA max |
| RF Connectors .....                  | GPPO Blind Mate    |
| Operating Temperature Range .....    | -10 to +65° C      |
| Package Size .....                   | 3.5" x 2.4" x 0.5" |

## DESCRIPTION

This miniature switch matrix is utilized to route two input signals between a single output. Additionally, test paths and built-in test functions are included. The device is built using high reliability, chip and wire techniques and hermetically sealed aluminum housing.

